

OBI Model Portfolio Active 3



March 2021

Objective

This portfolio is NOT a risk-free portfolio, rather, it is suitable for a client who requires stability of capital and is prepared to accept small levels of capital losses when markets are falling, based on the higher non-equity asset allocation. The portfolio is managed dynamically by altering the asset allocation and by predominantly using low-risk assets that carry market risk and using all assets that are available from the investment universe. The asset allocation within this portfolio will vary between a benchmark of 0% equity and 35% equity on average to achieve the portfolio objectives, provided economic conditions permit. **The portfolio will be managed to try and limit the indicative capital loss in any rolling 12-month period to 6% in a significant event and 4% in normal market conditions and to target an annualised total return averaged out over an economic cycle (usually 5 – 7 years) of 4% per annum before any adviser, custodian, switch and/or discretionary investment management fees, but after fund manager charges.** Despite the higher allocation in non-equity assets, these asset classes are in some cases becoming riskier than equity assets, however we feel that the current positioning is acceptable when we consider our mandate regarding a client’s capital loss acceptance.

Management

The benchmark we use for comparison purposes for volatility is **AFI Cautious** noting that this benchmark currently holds **50.63% in Equity** (Analytics, 1st March 2021) and is therefore more aggressive than this portfolio. The benchmark also has no capital preservation mandate. It would therefore be expected that this benchmark would outperform the model and that the volatility of the benchmark would be higher. The model performance therefore cannot be directly compared to the benchmark.

Performance

Asset	1 Month	3 Months	6 Months	12 Months	YTD	3 Years	5 Years	7 Years	Since Launch 01/06/2009
OBI Active 3 Portfolio	-1.56%	1.28%	4.31%	7.67%	-0.57%	10.61%	21.67%	31.17%	107.41%
Benchmark	-2.19%	1.20%	5.31%	4.73%	-1.07%	12.07%	28.97%	37.45%	109.11%
UK Gilts	-5.51%	-5.22%	-4.48%	-3.07%	-6.41%	10.23%	15.30%	33.69%	67.63%
UK Equities	-0.69%	4.55%	11.61%	-1.99%	1.60%	2.69%	30.66%	27.08%	122.93%

Source: FE Analytics, 1st March

Asset Allocation

- MONEY MARKET (8.03%)
- UK FIXED INTEREST (13.80%)
- GLOBAL FIXED INTEREST (20.00%)
- OTHER NON-EQUITY (6.85%)
- PROPERTY (18.72%)
- UK EQUITY (10.06%)
- NORTH AMERICAN EQUITY (14.24%)
- EUROPEAN EQUITY (6.62%)
- ASIAN EQUITY (1.71%)

Equity 32.60% - Non-Equity 67.40%



Outcome Based Investing

At OCM, we believe that assets in a client portfolio should be adjusted through each phase of the economic cycle.

In line with the OBI strategy, at the extreme point when the cycle is at its most extended and the economies are overheating, it is our view that by moving defensively and focusing on the core portfolio assets, we are able to provide the desired outcome with the least amount of expected volatility.

The key with the strategy of “Outcome Based Investing” is to limit the surprises and capture as much of the upside as possible, with a focus on delivering the client’s strategised outcome.

Key Facts

Benchmark
AFI Cautious

Inception Date
01 June 2009

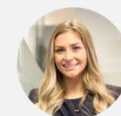
Historic Yield
2.18% per annum

Ongoing Strategy Charge
0.81% per annum

Rebalancing Frequency
Quarterly (or as required as per the OBI strategy)



Jason Stather-Lodge
Founder/CEO/CIO



Georgina Stone
Deputy CIO

Contact Us

OCM Wealth Management Limited
3 Bouverie Court,
The Lakes, Northampton, NN4 7YD
T: 01604 621467
E: info@ocmwealthmanagement.co.uk
W: ocmwealthmanagement.co.uk





OBI Active 3 is a cautious portfolio with a higher non-equity allocation based on a low-risk mandate, with the delivery of outcome and capital preservation at its core which aims to achieve a return outcome of 4% per annum.

Market Outlook

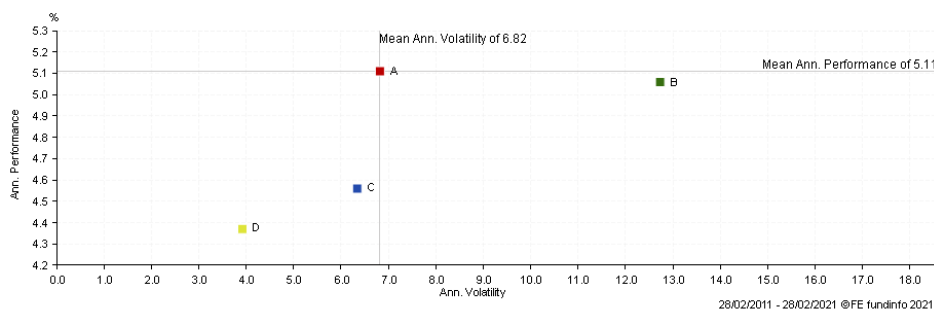
Despite some volatility throughout January, global equity markets started the year on strong footing, with risk assets experiencing a boost on an improving earnings outlook owing to mounting evidence of strong progress being made on the vaccination front. Although market conditions remain fragile through the first half of the year, the progress of vaccine distribution programmes in the US and UK have strengthened expectations of a robust economic recovery upon the release of pent-up demand, giving rise to increased inflation expectations as the year progresses. Investors have baked in expectations of elevated inflation this year, seen in the acceleration in government bond yields over the month, which has caused market participants to speculate about a sooner-than-expected rise in interest rates. This, in turn, has driven the outperformance of value versus growth stocks over February, albeit the outlook for both remains positive for 2021. Despite this, the inflationary pressures are likely to be transitory rather than permanent, suggesting the market has overreacted through the latest growth asset selloff. Market volatility is likely to remain high as early cycle dynamics unfold, however central banks are expected to maintain the same accommodative stance that they have outlined in recent meetings, with monetary policy expected to remain loose, and favourable financial conditions to remain in place.

As long-term investors, we view the recent market movements and events as short-term noise, with no changes to our underlying assumptions on global recovery, and market outlook. It remains our view that we will observe a recovery in activity in the months ahead, with accelerating vaccine rollouts allowing business and economic activity to return as lockdown restrictions ease. Looking further ahead, although it is clear that volatility remains in the short-term, we remain optimistic and continue to see opportunities arising as the outlook improves, with global growth remaining well supported by governments and central banks.

Portfolio Positioning

The portfolio has been constructed with a high level of diversification in terms of asset classes and geographies, with a mix of bond, equity, and property exposure to meet portfolio objectives over the long term. The exposure is gained through a high-quality mix of actively managed and passive, globally diverse equity and multi asset funds. Over the month, the portfolio was rebalanced to correct allocation drift, in order to keep the portfolio in line with its objectives and risk parameters. The portfolio benefitted from its diverse asset allocation, limiting losses compared to the benchmark. While we expect to see further volatility in the short term, we remain content with our positioning, and we remain well placed to benefit from an improvement in economic fundamentals over the year.

Portfolio Volatility



This scatter chart reflects annualised volatility and return in GBP over the past 10 years. Over the long term, we would expect the OBI portfolio to exhibit a lower level of volatility than the benchmark.

Key	Name	Annualised Performance	Annualised Volatility
A	AFI Cautious TR in GB	5.11	6.82
B	UK Psv UK Equities TR in GB	5.06	12.73
C	UK Psv UK Glts TR in GB	4.56	6.34
D	OBI Active 3 - Feb 2021 TR in GB	4.37	3.92

Important Information

All data in this document has been extracted from Analytics as at 1st March 2021. Past performance cannot be used as a guide to future performance and the value of your investment will fall as well as rise in value. You may not get back all of your investment and the final value of your investment will depend on the performance of your portfolio. Performance figures quoted include fund manager charges but exclude adviser, discretionary, custodian and switch charges. Unless stated, income is reinvested into the portfolio. The information contained in this document is for information purposes only. It does not constitute advice or a recommendation or an offer or solicitation for investment. Portfolio Expense is based on the Fusion platform and may vary for other platforms.